

**WARING**  
**COMMERCIAL**  
 314 ELLA T. GRASSO AVE.,  
 TORRINGTON, CT 06790  
 10-TRAY FOOD DEHYDRATOR  
 MODEL: WDH10E  
 220-240V AC 50-60Hz 800W  
 MADE IN CHINA  
**CAUTION: DO NOT IMMERSE IN LIQUID**  
 D/C:

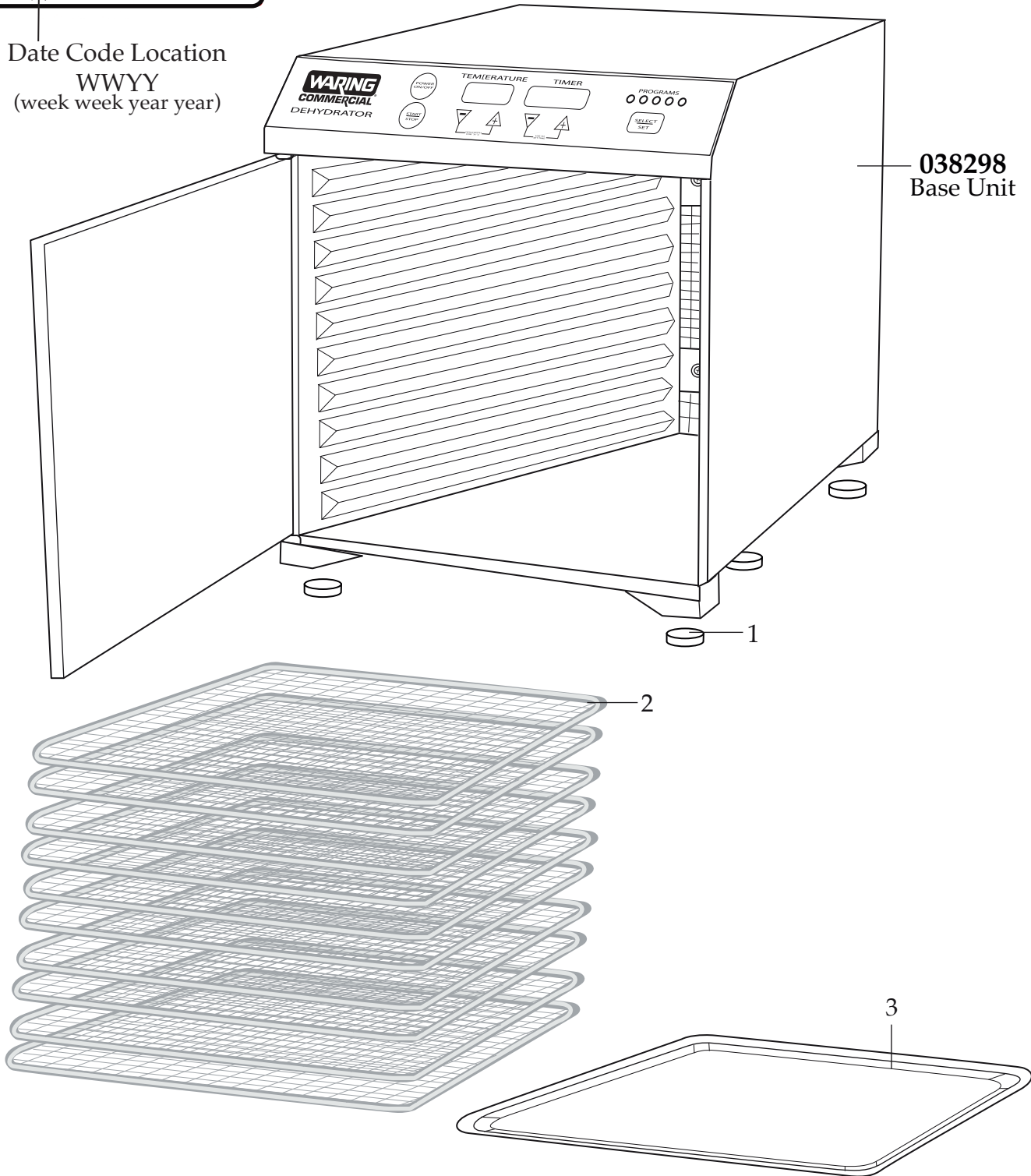
CE

EAC

**WARING**  
**COMMERCIAL**

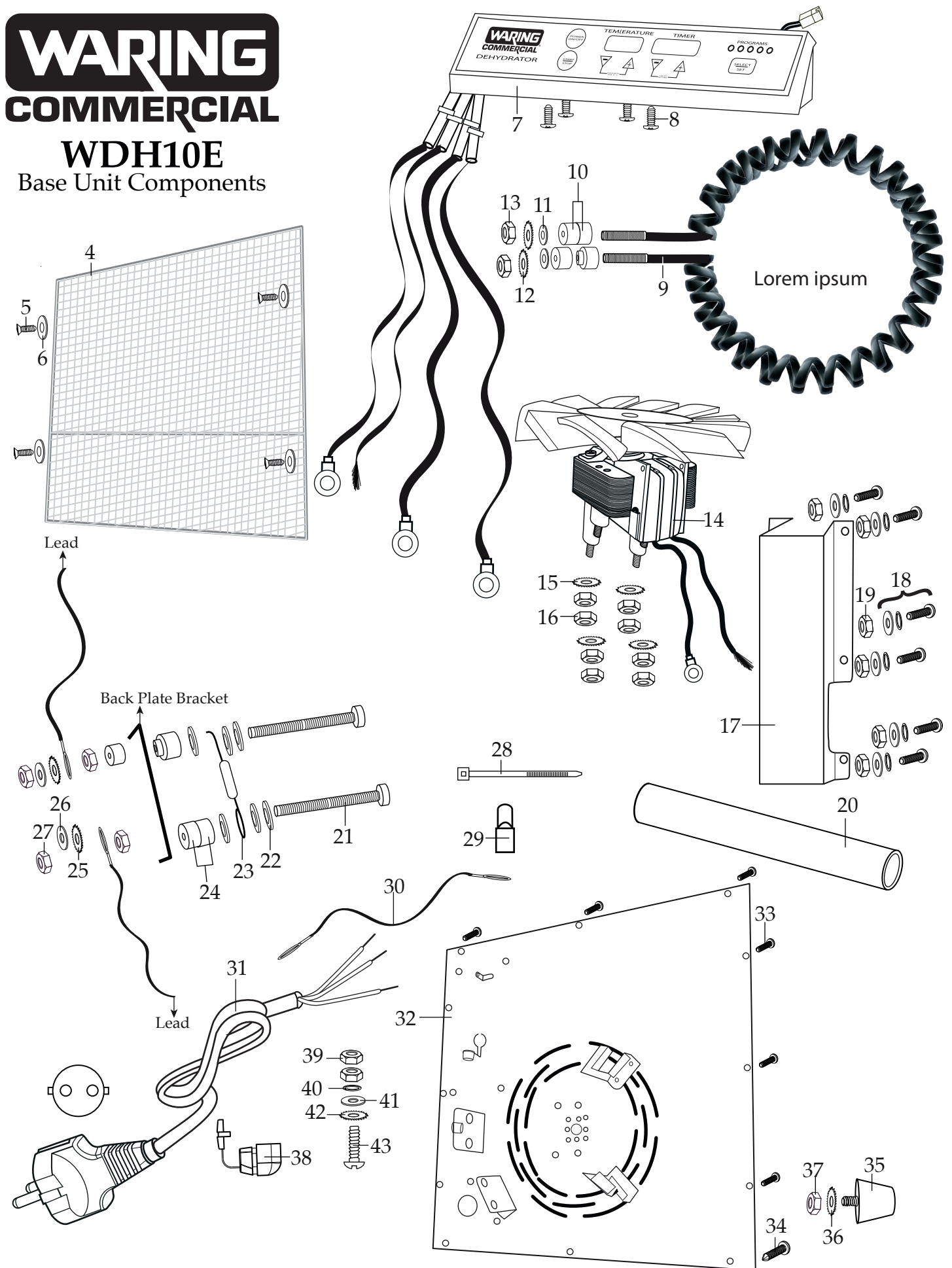
Europe 10 Tray Food Dehydrator  
**WDH10E**

Date Code Location  
 WWYY  
 (week week year year)



# WARING COMMERCIAL

## WDH10E Base Unit Components



<b>Illustration#</b>	<b>Part#</b>	<b>Description</b>
1	037448	Foot (4 required)
2	037462	Drying Tray (10 required)
3	037461	Drip Tray
4	037441	Rear Screen
5	037449	Screw (4 required)
6	003507	Washer (4 required)
7	037439	Control Panel Assembly
8	037440	Screw (4 required)
9	038300	Heater
10	037455	Ceramic Insulator Set (2 required)
11	037458	Washer (2 required)
12	037158	Lock Washer (2 required)
13	037453	Hex Nut (2 required)
14	038299	Motor
15	037158	Lock Washer (4 required)
16	037453	Hex Nut (8 required)
17	037442	Wiring Cover
18	037443	Screw, Washer and Spring Washer (6 required)
19	037453	Hex Nut (6 required)
20	037446	6" Rubber Sleeve
21	037457	Screw (2 required)
22	037458	Washer (6 required)
23	038303	Thermal Cut Off
24	037455	Ceramic Insulator Set (2 required)
25	037158	Lock Washer (2 required)
26	037458	Washer (2 required)
27	037453	Hex Nut (4 required)
28	013731	Wire Ties (5 required)
29	012409	Small Crimp Connector
30	038302	Blue Lead Assembly
31	038301	Cord
32	037464	Back Plate Assembly

<b>Illustration#</b>	<b>Part#</b>	<b>Description</b>
33	037452	Screw (9 required)
34	037451	Screw (3 required)
35	037447	Counter Stop
36	037158	Lock Washer
37	037453	Hex Nut
38	035476	Strain Relief
39	037453	Hex Nut (2 required)
40	037444	Spring Washer
41	037458	Washer
42	037158	Lock Washer
43	038304	Ground Screw